

## Application of Transformer Models for Advanced Process Optimization and Process Mining

*Ajay Tanikonda, Independent Researcher, San Ramon, CA, USA*

*Brij Kishore Pandey, Independent Researcher, Boonton, NJ, USA*

*Subba Rao Katragadda, Independent Researcher, Tracy, CA, USA*

*Sudhakar Reddy Peddinti, Independent Researcher, San Jose, CA, USA*

---

### Abstract

The exponential growth of data and increasing complexity of business processes necessitate advanced tools for process optimization and mining. Transformer models, originally designed for natural language processing, have demonstrated exceptional capabilities in sequence modeling and contextual understanding, making them increasingly relevant in automating and improving complex operational workflows. This paper explores the application of transformer models in process optimization and process mining, highlighting their potential to deliver data-driven insights, enhance automation, and enable continuous improvement across diverse organizational landscapes. By leveraging self-attention mechanisms and parallelized training, transformers efficiently model dependencies within large-scale data, facilitating granular analyses of process behaviors. This enables the identification of inefficiencies, bottlenecks, and patterns that would otherwise remain undetected.

The discussion begins by elucidating the foundational architecture of transformer models, emphasizing key components such as multi-head attention, positional encoding, and feedforward networks. Their adaptability to process optimization stems from their ability to capture temporal and contextual dependencies within sequential event logs, a critical requirement in process mining. Transformer-based approaches enable precise conformance checking, anomaly detection, and predictive analytics by synthesizing complex event sequences into actionable insights. Moreover, these models outperform traditional recurrent neural networks (RNNs) and long short-term memory (LSTM) networks by addressing issues

of vanishing gradients, limited parallelism, and inefficiency in capturing long-range dependencies.

The integration of transformers into process mining pipelines is illustrated through applications in diverse domains, including IT operations, manufacturing, and finance. In IT operations, transformer models automate incident detection and root cause analysis by processing event logs and telemetry data in real time. Manufacturing benefits from enhanced quality control and production scheduling, while financial processes such as fraud detection and compliance monitoring are streamlined through transformer-driven analysis. Case studies demonstrate the scalability and robustness of transformer models in extracting insights from heterogeneous data sources and their role in driving informed decision-making.

This paper further examines the training and deployment challenges associated with transformer models, including computational resource requirements, data preprocessing complexities, and interpretability concerns. To address these challenges, it highlights advancements in model optimization techniques, such as knowledge distillation, parameter sharing, and sparse attention mechanisms. Additionally, the adoption of pre-trained models and transfer learning techniques significantly reduces the computational burden, enabling wider accessibility for organizations with limited resources.

The research also explores emerging trends in the field, such as integrating transformers with reinforcement learning for adaptive process optimization and incorporating domain-specific constraints through hybrid architectures. The convergence of transformer models with edge computing and distributed frameworks presents new opportunities for real-time process mining in decentralized systems. These innovations, coupled with advancements in explainability techniques, ensure that transformer-driven systems are both effective and interpretable, fostering greater trust and adoption among stakeholders.

The potential risks and ethical considerations of transformer models in process optimization are critically assessed. Issues such as data privacy, bias in model training, and unintended process alterations are addressed, emphasizing the need for rigorous validation frameworks and ethical governance. Ensuring transparency and accountability in transformer-based decision-making systems remains paramount, particularly in regulated industries where errors can have significant ramifications.

**Keywords:**

transformer models, process optimization, process mining, automation, data-driven insights, self-attention mechanisms, continuous process improvement, predictive analytics, IT operations, process mining pipelines.

**1. Introduction**

Process optimization and process mining have become integral to improving operational efficiencies and uncovering actionable insights across a wide range of industries. Process optimization refers to the systematic approach of improving the performance of a given process by eliminating inefficiencies, reducing costs, and enhancing overall throughput. This is a critical function in sectors such as manufacturing, IT operations, logistics, and finance, where optimized processes translate into improved service delivery, reduced downtime, and better resource management. On the other hand, process mining involves the use of advanced data analytics to extract knowledge from event logs and operational data, enabling organizations to visualize, analyze, and improve their business processes. By applying algorithms to process data, process mining identifies deviations, bottlenecks, and inefficiencies that might not be apparent through traditional analysis.

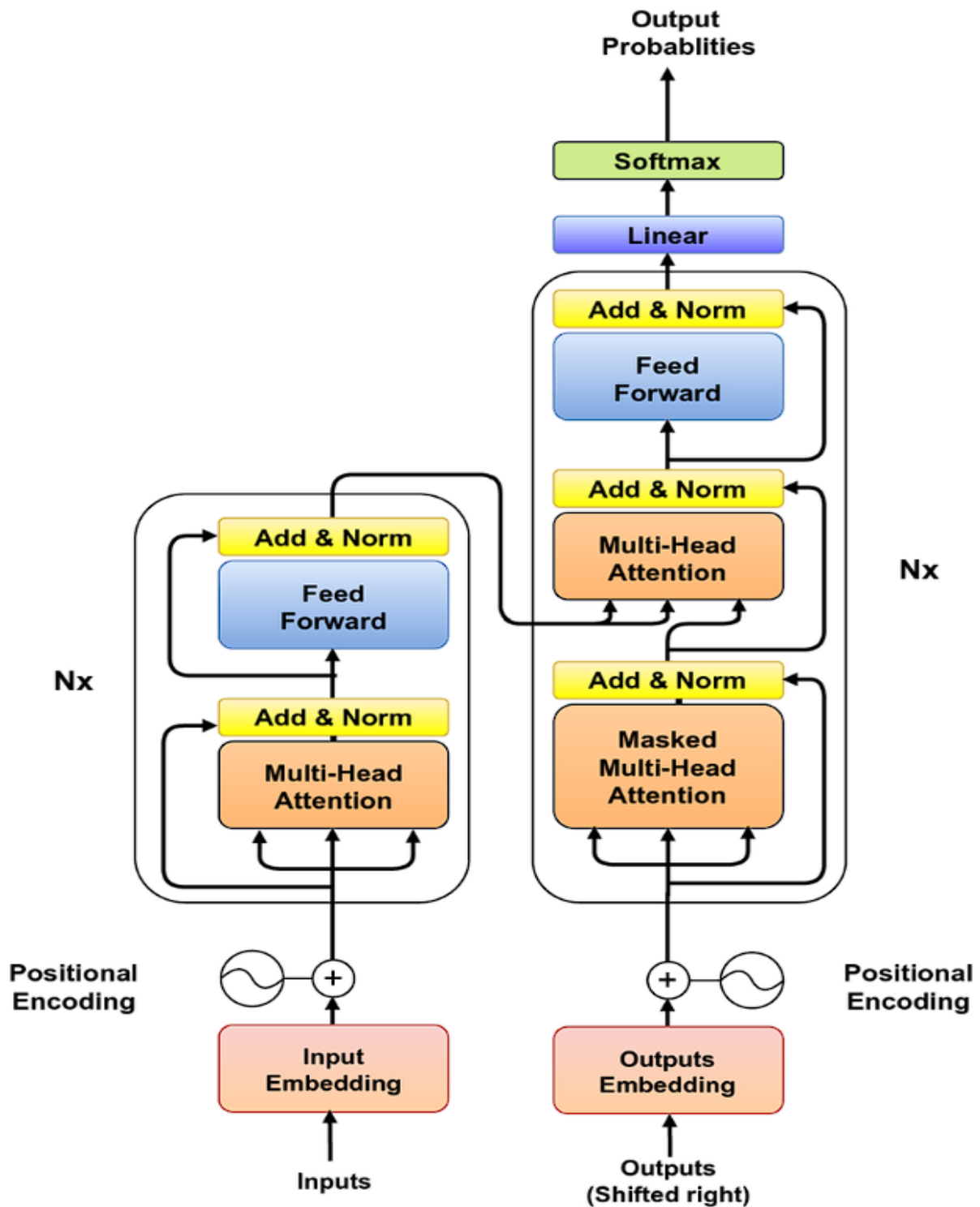
Traditionally, process optimization and mining have relied heavily on rule-based systems, heuristics, and statistical techniques. While these approaches have been effective to some extent, they face significant limitations when dealing with complex, dynamic, and large-scale systems. One major challenge is their inability to fully capture the intricate dependencies within large sets of sequential data. For instance, in process mining, identifying the sequence of actions in a workflow can be difficult when the data is noisy or when processes are inherently nonlinear and complex. Similarly, traditional process optimization techniques often struggle to adapt to evolving operational environments or make predictions based on incomplete or sparse data. As a result, the need for more robust, scalable, and adaptive models has become increasingly critical.

Recent advancements in machine learning and artificial intelligence (AI) have opened new possibilities in this domain, with transformer models emerging as a promising solution. Transformer models, first introduced in the context of natural language processing (NLP) by

Vaswani et al. in 2017, have demonstrated exceptional capabilities in capturing long-range dependencies and processing large volumes of data with high efficiency. Unlike traditional recurrent neural networks (RNNs) or long short-term memory (LSTM) models, transformers utilize self-attention mechanisms to weigh the importance of different parts of the input data, allowing them to process data in parallel rather than sequentially. This architectural advantage has led to transformers outperforming earlier models in tasks such as language translation, text generation, and contextual understanding. The application of transformer models in process optimization and mining represents a paradigm shift, enabling more precise and efficient analyses of large-scale, complex processes, which was not feasible with traditional methods. By leveraging the power of transformers, organizations can achieve deeper insights, automate routine tasks, and continuously improve their operational workflows.

## 2. Theoretical Foundations of Transformer Models





### 2.1 Architecture of Transformer Models

The architecture of transformer models, introduced in the seminal paper "Attention is All You Need" by Vaswani et al. in 2017, marked a significant departure from traditional sequence

modeling techniques, such as recurrent neural networks (RNNs) and long short-term memory networks (LSTMs). Transformers leverage a novel self-attention mechanism, allowing them to capture dependencies within data regardless of the distance between elements in the sequence. The key components of the transformer model include multi-head attention, positional encoding, and feedforward layers, each of which plays a pivotal role in its performance.

The multi-head attention mechanism is one of the defining characteristics of the transformer architecture. This component enables the model to focus on different parts of the input sequence simultaneously, facilitating the capture of various contextual relationships. In multi-head attention, the input is projected into multiple sets of queries, keys, and values, and attention is computed for each set independently. The outputs are then concatenated and linearly transformed, allowing the model to learn multiple types of attention patterns. This parallel processing of information allows the model to efficiently capture long-range dependencies, which is a limitation in traditional sequential models like RNNs or LSTMs.

Positional encoding is another critical component of the transformer. Unlike RNNs and LSTMs, which process input sequences in a sequential manner and inherently capture temporal order, transformers process all elements of the sequence simultaneously. This parallel processing introduces the challenge of maintaining the order of the sequence. Positional encodings, typically implemented as sinusoidal functions, are added to the input embeddings to inject information about the relative position of elements in the sequence. These encodings enable the transformer to understand the sequence order, which is crucial for tasks such as process mining, where the order of events plays a fundamental role.

The feedforward layers, present in both the encoder and decoder blocks of the transformer, perform additional transformations of the data after attention has been applied. These layers typically consist of two fully connected layers with a non-linear activation function in between, allowing the model to learn complex, non-linear relationships within the data. This structure enables the transformer to not only model long-range dependencies but also to perform high-level feature extraction and abstraction, which is essential for tasks like anomaly detection and process optimization.

When compared to traditional RNNs and LSTMs, transformers offer several advantages. RNNs and LSTMs, by design, process data sequentially, which makes them computationally

expensive for long sequences and prone to difficulties in capturing long-term dependencies due to issues like vanishing and exploding gradients. In contrast, transformers process sequences in parallel, significantly reducing training time and enabling the efficient modeling of long-range dependencies. Additionally, the self-attention mechanism employed by transformers allows them to assign varying levels of importance to different parts of the sequence, a capability that RNNs and LSTMs lack. While RNNs and LSTMs are effective for modeling time-series data, their sequential nature makes them less suitable for the scale and complexity required in process optimization tasks where the analysis of large, complex event logs is paramount.

## 2.2 Self-Attention Mechanism

The self-attention mechanism is at the heart of transformer models and represents a significant advancement over traditional sequence modeling techniques. In essence, self-attention allows the model to weigh the importance of different tokens (or elements) in the input sequence relative to each other, based on the context. This is achieved by computing attention scores between each pair of tokens, which determines how much focus each token should receive when producing the output representation.

Formally, for an input sequence, the self-attention mechanism computes three vectors for each token: the query, the key, and the value. The query and key vectors are used to calculate the attention score, which measures the degree of relevance or interaction between tokens. The attention score is then normalized using a softmax function to ensure it sums to one, and this score is applied to the value vectors to compute the weighted sum, which forms the output of the self-attention operation. This process is repeated for each token in the sequence, allowing the model to capture dependencies between all tokens, regardless of their position in the sequence.

The primary advantage of self-attention over traditional models is its ability to capture both short- and long-range dependencies within a single pass. In tasks such as process mining, this capability is invaluable, as event logs often contain complex, multi-step processes with dependencies that span across long periods of time. Traditional models, such as RNNs, are limited in their ability to maintain context over long sequences due to their sequential nature. In contrast, transformers can simultaneously evaluate the entire sequence and establish relationships between events that may be far apart, providing a more comprehensive

understanding of process flows and facilitating more accurate anomaly detection, root cause analysis, and predictive analytics.

Self-attention also contributes to the parallelization capabilities of transformers, enabling the model to process entire sequences simultaneously rather than step-by-step. This parallelism is particularly beneficial in real-time process optimization, where rapid analysis of incoming event logs and continuous adjustment of process parameters is required. By applying self-attention mechanisms, transformer models can be trained more efficiently and can scale to large datasets, which is a common challenge in industries where vast amounts of process data are generated in real-time.

### **2.3 Advances in Transformer Architectures**

Since the introduction of the original transformer model, several variants and adaptations have emerged, further enhancing its applicability and performance across a wide range of domains. Notable advancements include models such as BERT (Bidirectional Encoder Representations from Transformers), GPT (Generative Pre-trained Transformer), and Vision Transformers (ViTs), each of which introduces unique modifications to the original architecture and expands the transformer's capabilities beyond natural language processing.

BERT, developed by Google, revolutionized the use of transformer models in natural language understanding by leveraging bidirectional training. Unlike the original transformer, which processes sequences in one direction, BERT is trained to predict missing words in a sequence by considering both the preceding and following context. This bidirectional approach enables BERT to capture deeper semantic relationships within text, making it highly effective for tasks such as question answering and sentiment analysis. The pre-trained BERT model can then be fine-tuned on domain-specific tasks, such as process mining, where fine-grained understanding of event log data is essential for accurate process analysis and optimization.

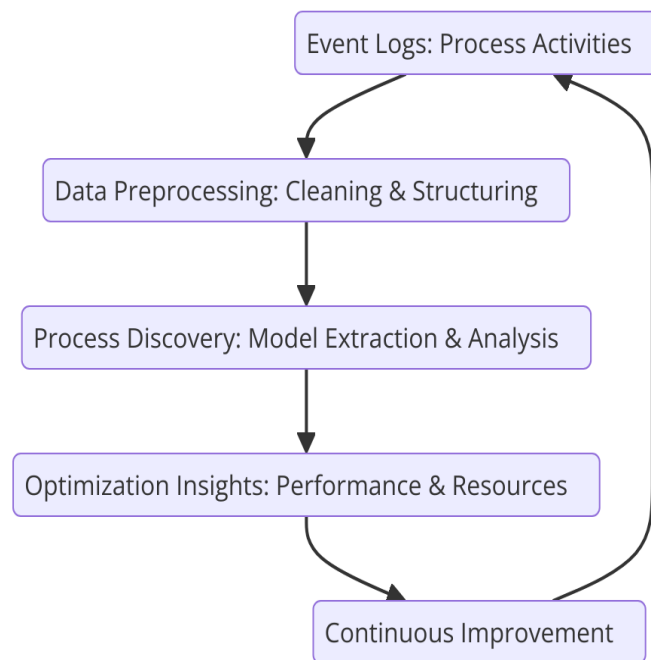
GPT, another influential model, focuses on generative tasks and is designed to predict the next token in a sequence, based on prior context. While it is unidirectional, GPT has proven to be highly effective in language generation and, more recently, in tasks such as code generation and predictive analytics. In the context of process optimization, GPT-like models can be trained to generate potential future process steps or suggest process improvements based on historical data. These models can be particularly useful in predictive process

analytics, where the goal is to forecast future process behaviors or recommend corrective actions in real-time.

Vision Transformers (ViTs) represent another significant adaptation of the transformer architecture, extending its use to computer vision tasks. Vision transformers break down images into patches, which are treated as sequences, and apply the same self-attention mechanism as in NLP tasks. While primarily used in image processing, the principles behind ViTs can be leveraged for optimizing visual data streams in process mining applications. For example, in manufacturing or logistics, visual sensors can capture images of operational events, and transformers can be used to analyze these visual data streams in conjunction with event logs to optimize workflows and identify inefficiencies.

The advancements in transformer models, particularly in the form of BERT, GPT, and ViTs, provide valuable insights and capabilities for process optimization and mining. These models are adaptable to various types of process data, whether textual, numerical, or visual, and offer superior scalability and flexibility compared to traditional methods. By leveraging these advanced transformer architectures, organizations can enhance their process optimization efforts, automate routine decision-making, and improve the overall efficiency of their operations.

### **3. Applications in Process Optimization and Process Mining**



### 3.1 Process Optimization

The application of transformer models in process optimization has garnered significant attention across industries such as information technology (IT), manufacturing, and finance, driven by the need to enhance operational efficiency, improve resource allocation, and reduce the time and cost associated with process improvements. In these sectors, transformer-based approaches offer advanced capabilities in the analysis and optimization of complex workflows, far surpassing traditional methods such as linear programming or heuristic models. Their ability to model intricate relationships between various system components and to predict outcomes based on historical data has made them an indispensable tool in driving process innovation.

In IT operations, transformer models are used to enhance system performance by automating the detection of inefficiencies, bottlenecks, and suboptimal configurations within complex network infrastructures. For example, they can analyze logs from multiple sources, such as servers, databases, and application logs, to identify anomalous behaviors that could indicate performance degradation. By leveraging self-attention mechanisms, transformers can effectively correlate disparate log entries and trace patterns of events that lead to failures or service degradation. Once these issues are identified, transformers can generate actionable

insights, providing IT teams with recommendations for system tuning, load balancing, or preventive maintenance, thus ensuring continuous optimization of the IT environment.

In manufacturing, transformer models facilitate the optimization of production workflows by identifying inefficiencies in supply chains, scheduling, and resource management. Transformers can analyze large volumes of production data, such as machine performance logs, sensor data, and historical maintenance records, to predict potential machine failures or downtime events. By integrating these predictive insights into automated decision-making systems, manufacturers can proactively address issues before they escalate, reducing unplanned downtimes and improving the overall productivity of manufacturing plants.

In the financial sector, transformer models are increasingly used to optimize trading strategies, risk management, and portfolio optimization. These models are adept at processing time-series data, such as stock prices, transaction volumes, and economic indicators, to predict market trends and inform investment decisions. Transformers can also automate the identification of risk factors by analyzing vast amounts of transactional data to detect emerging risks, fraud patterns, or compliance issues. By automating the process of risk analysis and generating real-time insights, financial institutions can make more informed decisions, optimize their operational strategies, and ensure better management of financial resources.

Furthermore, the automation of root cause analysis and incident detection is another critical area where transformers are making a significant impact. In industries dealing with large-scale data, transformers provide an efficient mechanism for identifying underlying causes of operational disruptions. For instance, in IT systems, if an incident such as a server crash occurs, transformers can automatically sift through event logs to trace the series of events leading to the failure. This not only reduces the mean time to resolution (MTTR) but also helps organizations gain a deeper understanding of system vulnerabilities and mitigate future risks through improved process design.

### **3.2 Process Mining**

Process mining is an emerging field that combines data mining techniques with process management, aiming to extract actionable insights from event logs and workflow data. Transformer models, due to their proficiency in sequence modeling, have become an

indispensable tool for advancing process mining techniques, enabling more sophisticated forms of conformance checking, anomaly detection, and predictive analytics.

Conformance checking, a critical aspect of process mining, involves comparing the actual execution of processes with predefined models or standards to detect deviations and ensure compliance. Transformer models can enhance this process by analyzing sequences of events in real-time and comparing them to the expected process flows. The self-attention mechanism in transformers enables them to focus on relevant portions of the process execution, even when those portions are distant in the event log. This ability to capture long-range dependencies allows transformers to more accurately identify and diagnose deviations, improving the effectiveness of conformance checking.

Anomaly detection is another area where transformer models have demonstrated considerable potential. Traditional anomaly detection methods, such as statistical modeling or clustering, often struggle to detect complex, subtle anomalies in process data. Transformers, on the other hand, can process large and high-dimensional datasets, such as sensor data, transaction logs, and system performance metrics, and learn to recognize patterns that indicate abnormal behavior. By analyzing temporal dependencies and intricate relationships between events, transformers can identify anomalies that might go undetected by conventional methods. For example, in financial process mining, transformers can detect unusual trading behaviors or fraudulent transactions that deviate from expected patterns, enabling rapid intervention and mitigation.

Predictive analytics, an essential component of process mining, benefits significantly from transformer models' capacity to forecast future events based on historical data. By analyzing past process logs, transformers can predict future bottlenecks, process delays, or failure points, providing organizations with the foresight needed to optimize workflows and allocate resources more effectively. For example, in manufacturing, predictive analytics powered by transformers can forecast when a particular machine is likely to fail, allowing for preventive maintenance scheduling that minimizes downtime and keeps production on track. Similarly, in IT operations, transformers can predict when a system is likely to encounter performance issues, enabling proactive remediation measures.

Case studies illustrate the successful application of transformer models in process mining across various industries. In a large-scale supply chain optimization project, a transformer

model was deployed to analyze event logs from multiple warehouses, transportation systems, and inventory databases. The model identified patterns of delays and inefficiencies in the supply chain, leading to process redesigns that improved throughput and reduced operational costs. Another case study from the finance sector involved the use of transformers to monitor and analyze transaction logs for compliance with anti-money laundering (AML) regulations. The model effectively identified suspicious transactions that traditional methods had missed, demonstrating the power of transformer-based process mining in detecting fraud and ensuring regulatory compliance.

### **3.3 Integration with Existing Systems**

While transformer models offer significant advantages in process optimization and mining, their integration into existing process pipelines and legacy systems presents several challenges. These challenges arise from the need to handle diverse data sources, ensure seamless data flow, and adapt transformer models to various system architectures. Integrating transformers into existing workflows requires careful consideration of both the technical and operational aspects to ensure their effectiveness and scalability.

One of the primary challenges is the integration of transformer models with legacy IT systems and data sources. Traditional systems may not be designed to handle the computational demands of transformer models, which require significant processing power, especially when dealing with large datasets. Additionally, legacy systems often store data in a variety of formats, and ensuring compatibility with transformer-based pipelines can require substantial data preprocessing and transformation. To overcome these challenges, hybrid approaches that combine traditional methods with transformer models are being explored. These hybrid approaches leverage the strengths of both paradigms, allowing organizations to continue using their existing systems while incorporating the advanced capabilities of transformers.

For example, in an IT operations setting, traditional rule-based systems may be used to monitor system health, while transformer models could be integrated to provide more nuanced insights into system behavior. The rule-based system could flag potential issues, and the transformer model could then analyze the event logs in more detail, identifying the underlying causes and predicting future failures. Similarly, in manufacturing, traditional process control systems may continue to monitor and control machinery, while transformer

models could be applied to analyze historical sensor data and provide predictive maintenance recommendations.

Another challenge in integration is the real-time nature of process optimization and mining. Transformers are computationally intensive models, and processing large streams of data in real time can be resource-heavy. Efficient model deployment strategies, such as model pruning, quantization, and distributed computing, are necessary to ensure that transformers can operate effectively within real-time constraints. Additionally, ensuring that the model remains adaptable and scalable as process data grows is essential for long-term success. Solutions like cloud-based machine learning platforms or edge computing architectures can help address these scalability and computational challenges, enabling seamless integration into dynamic, large-scale environments.

Ultimately, the integration of transformer models into existing systems is not merely a technical challenge but also involves aligning organizational processes, training staff, and ensuring that the insights generated by these models are actionable and aligned with business objectives. Successful integration requires collaboration between data scientists, domain experts, and operational teams to design systems that leverage the strengths of transformer models while minimizing potential disruptions to existing workflows. Through such hybrid approaches, organizations can take full advantage of the advanced capabilities of transformer models in process optimization and mining while maintaining the integrity and continuity of their existing systems.

#### **4. Challenges and Innovations in Implementation**

##### **4.1 Technical Challenges**

The implementation of transformer models in process optimization and mining is accompanied by several technical challenges that must be addressed to fully harness their potential. These challenges are primarily rooted in the computational resource demands, data preprocessing complexities, and issues surrounding model interpretability.

One of the most significant challenges is the substantial computational resource requirements of transformer models. Unlike traditional machine learning algorithms, which may require relatively modest resources, transformer models are computationally intensive due to their

reliance on self-attention mechanisms and the need to process large volumes of data simultaneously. The complexity of transformers scales with the size of the input data and the number of model parameters, necessitating high-performance computing environments equipped with specialized hardware such as GPUs or TPUs. This dependency on high computational power can pose significant barriers to organizations with limited resources, especially in real-time process optimization scenarios where large datasets must be processed continuously.

In addition to the computational demands, the preprocessing of data for transformer models can be particularly challenging. Data used in process optimization and mining often comes from diverse sources, including system logs, sensor readings, transaction records, and process histories. These datasets are typically noisy, incomplete, and unstructured, requiring extensive preprocessing to transform raw data into a format suitable for feeding into transformer models. For instance, event logs may need to be parsed and cleaned to remove irrelevant or erroneous entries, while sensor data might require normalization to ensure consistency across different sources. Additionally, temporal dependencies in the data must be preserved and accurately represented, which can be a non-trivial task when dealing with large-scale and complex datasets. These preprocessing complexities can increase the time and resources required to deploy transformer-based solutions effectively.

Another major challenge is the issue of interpretability in transformer models. Despite their impressive performance in many tasks, transformer models are often considered black-box models due to their intricate architecture and complex decision-making processes. This lack of transparency poses significant challenges in domains like process optimization and process mining, where stakeholders need to understand and trust the insights generated by the model. For example, in a manufacturing environment, the results from a transformer model that recommends changes to the production schedule may need to be explained in a manner that operators can comprehend and act upon. Without interpretability, decision-makers may hesitate to rely on the model's outputs, particularly when the stakes are high and human expertise is integral to the optimization process. This challenge underscores the need for methods that enhance the transparency of transformer models and provide explanations for their predictions, particularly in complex and mission-critical operational contexts.

#### **4.2 Solutions and Innovations**

To address these technical challenges, several innovative solutions have been proposed that aim to enhance the efficiency and interpretability of transformer models, while also reducing the computational burdens associated with their implementation.

One such solution is knowledge distillation, a technique that involves transferring the knowledge learned by a large, complex model (the teacher model) to a smaller, more efficient model (the student model). In the context of transformers, knowledge distillation can be used to create a lightweight version of the model that retains much of the predictive accuracy of the original while significantly reducing computational resource requirements. This smaller model can be deployed more easily in resource-constrained environments, such as edge devices or real-time systems, without sacrificing too much performance. Knowledge distillation thus provides a practical method for making transformer models more accessible and feasible for a broader range of applications, especially in industries with limited computational infrastructure.

Another innovative approach to addressing the computational challenges is the use of parameter sharing and sparse attention mechanisms. Traditional transformer models have a large number of parameters, which require extensive memory and computation. By employing parameter sharing techniques, where parameters are reused across different parts of the model, the number of parameters can be reduced without compromising the model's capacity to learn complex patterns. Sparse attention mechanisms further improve efficiency by limiting the number of token interactions that the model must process at each step, thereby reducing the computational load. In sparse attention, instead of attending to all tokens in a sequence, the model only focuses on a subset of relevant tokens, which can greatly enhance the model's efficiency, especially when dealing with long sequences of data typical in process mining tasks.

The adoption of pre-trained models and transfer learning has also proven to be an effective solution for reducing the amount of data and training time required to implement transformer models. Pre-trained models, such as BERT or GPT, are trained on large, generalized datasets and can be fine-tuned on domain-specific data with relatively minimal adjustments. Transfer learning allows organizations to leverage these pre-trained models to jump-start the process optimization and mining tasks, significantly accelerating the deployment process. In practice, organizations can fine-tune a transformer model on historical process data to adapt it to

specific operational requirements, thereby avoiding the need to train a model from scratch and saving both time and resources.

### 4.3 Emerging Trends

As transformer models continue to evolve, several emerging trends are shaping their integration with process optimization and process mining, particularly in the context of adaptive, real-time systems. Two key trends—integrating transformers with reinforcement learning for adaptive process optimization, and leveraging edge computing and distributed frameworks for real-time process mining—are particularly noteworthy.

The combination of transformer models with reinforcement learning (RL) has the potential to significantly enhance adaptive process optimization. RL, which focuses on learning optimal decision-making strategies through interaction with an environment, can be effectively integrated with transformers to optimize complex processes in dynamic and uncertain environments. In process optimization, this integration allows transformers to not only predict the outcome of different actions based on historical data but also to adapt their strategies in real-time as they receive feedback from the environment. For instance, in a manufacturing setting, an RL agent combined with a transformer model could continuously adjust production schedules based on real-time performance metrics, maximizing efficiency while minimizing waste. This adaptive capability allows for more resilient process optimization systems that can learn and evolve in response to changing conditions, offering substantial benefits in industries where conditions fluctuate rapidly, such as finance or IT operations.

Another significant trend is the use of edge computing and distributed frameworks to enable real-time process mining. The need to process vast amounts of data in real-time, especially in environments with limited bandwidth or where quick decision-making is critical, necessitates the use of edge computing. By processing data closer to the source, edge computing minimizes latency and reduces the reliance on centralized cloud infrastructure. When integrated with transformer models, edge computing allows for distributed analysis of event logs and process data, facilitating near-instantaneous feedback for process optimization. Distributed frameworks, such as federated learning, further enhance this capability by enabling multiple decentralized devices to collaboratively train a model while preserving data privacy. In real-time process mining, transformers can process event data from various edge devices, detect

anomalies, and predict potential disruptions with minimal delay. This trend is particularly important for industries like manufacturing, healthcare, and IT operations, where the ability to detect and respond to issues quickly can prevent costly disruptions and improve overall system performance.

## 5. Ethical and Future Perspectives

### 5.1 Ethical Considerations

The deployment of transformer models in process optimization and process mining brings forth several ethical considerations that must be carefully addressed to ensure the responsible use of such advanced technologies. Key concerns revolve around data privacy, security, and the potential for bias and unintended consequences, particularly in high-stakes environments such as healthcare, finance, and manufacturing.

Data privacy and security stand as paramount ethical concerns in the context of process optimization and mining, especially when dealing with sensitive information such as personal data, transaction histories, and proprietary business operations. Transformer models, by virtue of their complexity and the large volumes of data they require for training, often necessitate access to highly sensitive data. This access raises significant privacy risks, particularly if the data is not properly anonymized or if the model inadvertently exposes private information. In industries such as healthcare, where data confidentiality is critical, or finance, where proprietary trading algorithms could be exposed, ensuring robust encryption, secure data storage, and compliance with regulatory frameworks such as GDPR or HIPAA is essential. Furthermore, the use of decentralized data storage models, such as those enabled by blockchain or federated learning, can offer promising solutions to mitigate data privacy concerns while still enabling the necessary model training and insights generation.

Equally important is the issue of bias and unintended consequences that may arise in the deployment of transformer models. These models, like all machine learning algorithms, are prone to inheriting and amplifying biases present in the training data. If the data used to train a transformer model contains biases—whether related to gender, ethnicity, or operational inefficiencies—the model may generate skewed outputs that reinforce or exacerbate these biases. In process optimization, this could manifest as suboptimal or discriminatory decisions

in resource allocation, scheduling, or prioritization of tasks. For instance, in an IT infrastructure optimization scenario, if the model learns from historical data that disproportionately favors certain types of incidents over others, it could lead to inefficient handling of emerging issues that do not fit the prior pattern. Similarly, in manufacturing, biased optimization could favor processes that have been historically more reliable, while overlooking potential improvements in newer, less-tested workflows. Addressing these biases requires meticulous curation of training data, as well as the development of bias detection and mitigation strategies, such as adversarial training, fairness constraints, and continuous monitoring of model outputs to identify and correct disparities.

The unintended consequences of transformer models in process optimization and mining also extend to broader social and economic factors. For example, the automation of decision-making processes in industries such as manufacturing or finance could lead to job displacement or the concentration of decision-making power in the hands of a few highly skilled professionals, which may have wider societal impacts. The ethical challenge, therefore, is to balance the efficiency gains provided by transformer models with the equitable distribution of their benefits. This may require establishing ethical frameworks and governance structures that ensure the responsible implementation of AI-driven optimization processes.

## 5.2 Future Directions

As transformer models continue to evolve and find applications in diverse sectors, several key directions for future development emerge. These developments span domain-specific customization, advancements in interpretability and scalability, and the potential for interdisciplinary applications that bridge the gap between process optimization, process mining, and other advanced fields.

One of the most promising future directions for transformer models in process optimization and mining is the domain-specific customization of models. While transformer models, such as BERT and GPT, have been primarily developed and applied to general language processing tasks, there is significant potential in adapting these models to cater to the unique characteristics of specific domains. For instance, in manufacturing, transformer models could be customized to handle real-time sensor data, machine diagnostics, and supply chain logistics. In the context of finance, they could be fine-tuned to better process transaction data

and optimize trading strategies. By tailoring transformer models to the specific features of each domain, it becomes possible to unlock even more precise, relevant insights that drive operational efficiency and process optimization. Additionally, domain-specific models would improve the scalability of solutions across industries, as they would better handle the intricacies and nuances inherent in each sector.

Another key area of future work is enhancing the interpretability of transformer models. As mentioned earlier, one of the major criticisms of transformer models is their black-box nature, which can hinder trust and adoption in high-stakes decision-making environments. As these models become more deeply integrated into critical processes, particularly in sectors such as healthcare or finance, interpretability will become an essential requirement. Researchers are actively exploring various approaches to improve the explainability of transformer models, such as attention visualization techniques, decision attribution methods, and the development of surrogate models that provide simplified, interpretable explanations. Future innovations in this area could lead to hybrid models that balance the predictive power of transformers with the transparency needed for informed decision-making.

Scalability remains another challenge for the broader adoption of transformer models in real-time process optimization and mining, particularly in large-scale industrial settings. Current transformer architectures can struggle with processing vast, continuously evolving data streams, such as those found in sensor networks or transactional databases. Overcoming scalability issues may involve the development of more efficient attention mechanisms, the incorporation of hierarchical models to manage different levels of data complexity, or the integration of transformers with distributed computing platforms such as cloud and edge computing. These advancements could enable real-time, large-scale optimization and mining applications that span multiple domains.

Beyond process optimization and mining, the future potential for transformers extends into interdisciplinary applications that bridge artificial intelligence with other advanced fields, such as reinforcement learning, robotics, and natural language processing. For example, transformers can be integrated with reinforcement learning algorithms to create adaptive systems capable of continuously learning and evolving based on real-time data. In robotics, transformer models could be used to optimize task execution and coordination in manufacturing or service automation. Similarly, the application of transformers to natural language processing tasks, such as interpreting unstructured process logs or generating

automated reports, could further enhance process mining efforts. The interdisciplinary nature of transformer models allows for the creation of hybrid systems that combine multiple AI techniques, thereby driving innovation across a variety of sectors.

### 5.3 Conclusion

In conclusion, the application of transformer models to process optimization and mining represents a transformative shift in the way industries approach process efficiency, decision-making, and continuous improvement. This research has explored the theoretical foundations of transformer models, examined their potential applications in diverse sectors, and discussed the challenges and innovations associated with their implementation. While significant strides have been made in optimizing process workflows using transformers, challenges related to computational resource requirements, data preprocessing, and model interpretability remain important areas of focus for future research.

The ethical considerations discussed highlight the need for responsible deployment of transformer models, particularly in terms of data privacy, security, and the mitigation of bias. Addressing these concerns will be crucial in ensuring that the benefits of transformer-based process optimization and mining are realized in a fair, transparent, and socially responsible manner.

Looking ahead, the future of transformer models in process optimization and mining is bright, with opportunities for further innovation in domain-specific customization, interpretability, and scalability. As transformer architectures continue to evolve and integrate with other advanced AI techniques, their potential to revolutionize industries and create adaptive, intelligent systems will only increase. The interdisciplinary applications of transformer models, coupled with emerging technologies such as edge computing and reinforcement learning, promise to further accelerate the adoption of AI-driven process optimization solutions across industries, offering unprecedented improvements in operational efficiency and effectiveness.

### References

1. Wang, Z., Wan, Z., & Wan, X. (2020, April). Transmodality: An end2end fusion method with transformer for multimodal sentiment analysis. In Proceedings of the web conference 2020 (pp. 2514-2520).
2. Chen, B. et al. (2021). Transformer-Based Language Model Fine-Tuning Methods for COVID-19 Fake News Detection. In: Chakraborty, T., Shu, K., Bernard, H.R., Liu, H., Akhtar, M.S. (eds) Combating Online Hostile Posts in Regional Languages during Emergency Situation. CONSTRAINT 2021. Communications in Computer and Information Science, vol 1402. Springer, Cham. [https://doi.org/10.1007/978-3-030-73696-5\\_9](https://doi.org/10.1007/978-3-030-73696-5_9)
3. L. Mathew and V. R. Bindu, "A Review of Natural Language Processing Techniques for Sentiment Analysis using Pre-trained Models," 2020 Fourth International Conference on Computing Methodologies and Communication (ICCMC), Erode, India, 2020, pp. 340-345, doi: 10.1109/ICCMC48092.2020.ICCMC-00064.
4. Goodfellow, I. J., Shlens, J., & Szegedy, C. (2014). Explaining and harnessing adversarial examples. arXiv preprint arXiv:1412.6572.
5. Busso, C., Bulut, M., Lee, CC. et al. IEMOCAP: interactive emotional dyadic motion capture database. Lang Resources & Evaluation 42, 335-359 (2008). <https://doi.org/10.1007/s10579-008-9076-6>
6. Zuo, Simiao, et al. "Transformer hawkes process." *International conference on machine learning*. PMLR, 2020.
7. Günther, Christian W., and Wil MP van der Aalst. "A Generic Import Framework for Process Event Logs: Industrial Paper." *International Conference on Business Process Management*. Berlin, Heidelberg: Springer Berlin Heidelberg, 2006.
8. Lee, C. K. H., et al. "A slippery genetic algorithm-based process mining system for achieving better quality assurance in the garment industry." *Expert systems with applications* 46 (2016): 236-248.
9. Geng, Zhiqiang, et al. "Novel transformer based on gated convolutional neural network for dynamic soft sensor modeling of industrial processes." *IEEE Transactions on Industrial Informatics* 18.3 (2021): 1521-1529.

10. Kalusivalingam, Aravind Kumar, et al. "Leveraging Bidirectional Encoder Representations from Transformers (BERT) and Latent Dirichlet Allocation (LDA) for Enhanced Natural Language Processing in Electronic Health Record Data Mining." *International Journal of AI and ML* 1.2 (2012).
11. Vipin Saini, Sai Ganesh Reddy, Dheeraj Kumar, and Tanzeem Ahmad, "Evaluating FHIR's impact on Health Data Interoperability ", *IoT and Edge Comp. J*, vol. 1, no. 1, pp. 28-63, Mar. 2021.
12. Maksim Muravev, Artiom Kuciuk, V. Maksimov, Tanzeem Ahmad, and Ajay Aakula, "Blockchain's Role in Enhancing Transparency and Security in Digital Transformation", *J. Sci. Tech.*, vol. 1, no. 1, pp. 865-904, Oct. 2020.
13. Ma, Tinghuai, et al. "T-bertsum: Topic-aware text summarization based on bert." *IEEE Transactions on Computational Social Systems* 9.3 (2021): 879-890.
14. Zhang, Ting, et al. "Sentiment analysis for software engineering: How far can pre-trained transformer models go?." *2020 IEEE International Conference on Software Maintenance and Evolution (ICSME)*. IEEE, 2020.
15. Liu, Hui, et al. "A novel transformer-based neural network model for tool wear estimation." *Measurement Science and Technology* 31.6 (2020): 065106.
16. Mayer, Tobias, Elena Cabrio, and Serena Villata. "Transformer-based argument mining for healthcare applications." *ECAI 2020*. IOS Press, 2020. 2108-2115.
17. Le, Nguyen Quoc Khanh, et al. "A transformer architecture based on BERT and 2D convolutional neural network to identify DNA enhancers from sequence information." *Briefings in bioinformatics* 22.5 (2021): bbab005.
18. Luitse, D., & Denkena, W. "The great transformer: Examining the role of large language models in the political economy of AI." *Big Data & Society*, 8(2)(2021), 20539517211047734.
19. Wang, C., Li, M., & Smola, A. J. Language models with transformers. *arXiv preprint arXiv:1904.09408*. (2019).



**Journal of Science & Technology (JST)**

ISSN 2582 6921

Volume 3 Issue 5 [Sept Oct 2022]

© 2022 All Rights Reserved by [The Science Brigade Publishers](#)